

REVISIONS			
REV	DESCRIPTION	DATE	APPROVED

REVISE ON CAD ONLY  
UG PART: 6S7078-0417  
( SPEC: 357B5097 )

NOTES:

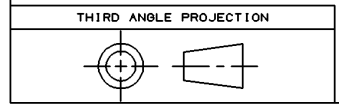
- SEE DEVICE SUMMARY (MLI 0414) FOR CONTROL DEVICE SETTINGS.
- ALL LINES WITH AN AD DESIGNATION ARE FOR REFERENCE ONLY, NOT INTENDED TO DEPICT TRUE LOCATION ON CASING.
- BEARING SEALING AIR DIRT SEPARATOR BLOWDOWN VALVE IS TO BE OPEN DURING ALL ABRASIVE CLEANING OPERATIONS AND IS TO BE CLOSED AT ALL OTHER TIMES.
- OFF BASE BLOWER (MLI 1233) FOR TURBINE SHELL AND EXHAUST FRAME COOLING.
- THE TOTAL ALLOWABLE PRESSURE DROP IN THE INSTALLER'S PIPING FROM THE PURCHASER CONNECTIONS AT THE EXHAUST FRAME BLOWER MODULE (CA13A AND CA13B) TO PURCHASER CONNECTION AT THE TURBINE BASE (CA13C ) IS 8.0 INCHES H2O (203 MM H2O) AT A FLOW RATE OF 4480 CFM (7610 M<sup>3</sup>/HR). EACH BLOWER HAS AN OUTPUT OF 2240 CFM (3805 M<sup>3</sup>/HR) AT A TEMPERATURE OF 71°F (21°C).
- FA6-1 FILTER SHELL DRAIN NORMALLY CLOSED.
- AD-6 SEE STARTING MEANS (MLI 0421).
- CUSTOMER TO SUPPLY HEAT TRACING TO LINES THAT ARE INDICATED, WHICH MAY ENCOUNTER CONDENSATE FREEZING.
- FOR INSTALLATION PURPOSES SEE MLI 557T FOR MATERIAL REQUIRED
- AD-2 SEE LIQUID FUEL (MLI 0424) AND WATER WASH ( MLI 0442).
- AD-3 SEE CONTROL AIR (MLI 0419).
- AD-5; FOR PURGE PRESSURE TRANSDUCERS MANIFOLD (MLI 0477).
- AD-8 SEE ATOMIZING AIR (MLI 0425).
- AD-11; INLET AIR HEATING MANIFOLD.
- TO INLET AIR HEATING, REFER TO THE MLI 0432 FOR OPERATING CONDITIONS.
- PIPING EXTENDING ABOVE TURBINE COMPARTMENT ENCLOSURE SHALL BE INSULATED FOR HEAT RETENTION AND PERSONNEL PROTECTION IN ACCORDANCE WITH 355A7453. SYSTEM OPERATION TEMPERATURE IS 700°F.

1	SYMBOLS, PIPING	277A2415
1T.	NOMENCLATURE	IDENT
LIST OF COMPLEMENTARY DOCUMENTS		

-	-	-	REV	REV STATUS
3	2	1	SH	OF SHEETS

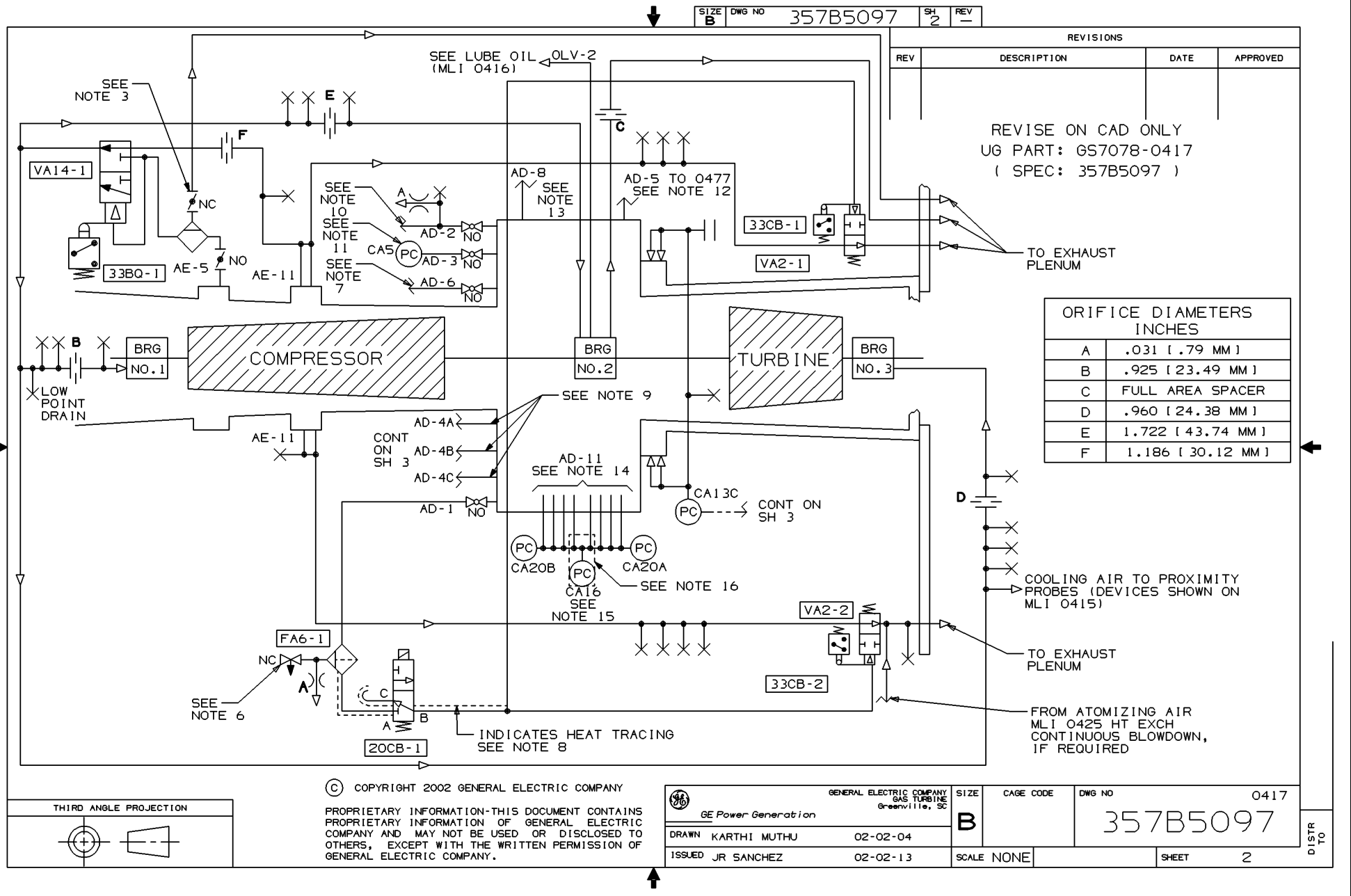
© COPYRIGHT 2002 GENERAL ELECTRIC COMPANY

PROPRIETARY INFORMATION-THIS DOCUMENT CONTAINS PROPRIETARY INFORMATION OF GENERAL ELECTRIC COMPANY AND MAY NOT BE USED OR DISCLOSED TO OTHERS, EXCEPT WITH THE WRITTEN PERMISSION OF GENERAL ELECTRIC COMPANY.



UNLESS OTHERWISE SPECIFIED	SIGNATURES	DATE	GE Power Generation		GENERAL ELECTRIC COMPANY GAS TURBINE Greenville, SC	
DIMENSIONS ARE IN INCHES.	DRAWN KARTHI MUTHU	02-02-04	DIAGRAM, SCHEM PP-CLG & SEG AIR FIRST MADE FOR ML-7A1PEA1-16 0417			
TOLERANCES ON:	CHECKED JT BROWN	02-02-08				
2 PL DECIMALS ± -	ENGRG J ORTEGA	02-02-08				
3 PL DECIMALS ± -	ISSUED JR SANCHEZ	02-02-13				
ANGLES ± - -	QC JW TRAYLOR	02-02-08				
FRACTIONS ± - ✓			SIZE <b>B</b>	CAGE CODE	DWG NO 357B5097	DISTR TO
	SIM TO: 355B7876	SCALE NONE	SHEET 1			

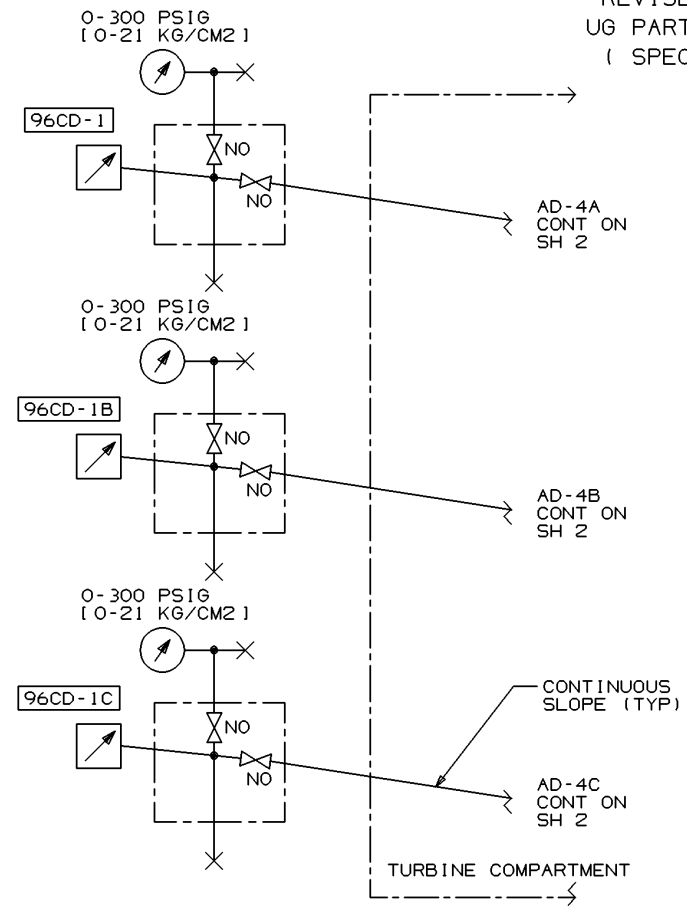
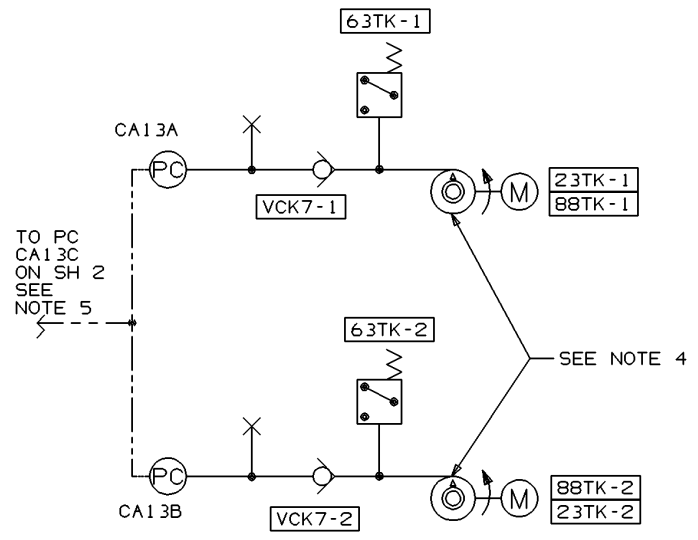
DT-1N



SIZE **B** DWG NO 357B5097 SH 3 REV -

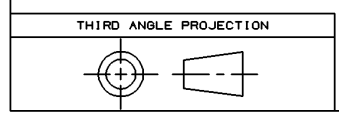
REVISIONS			
REV	DESCRIPTION	DATE	APPROVED

REVISE ON CAD ONLY  
UG PART: GS7078-0417  
( SPEC: 357B5097 )



© COPYRIGHT 2002 GENERAL ELECTRIC COMPANY

PROPRIETARY INFORMATION-THIS DOCUMENT CONTAINS PROPRIETARY INFORMATION OF GENERAL ELECTRIC COMPANY AND MAY NOT BE USED OR DISCLOSED TO OTHERS, EXCEPT WITH THE WRITTEN PERMISSION OF GENERAL ELECTRIC COMPANY.



GENERAL ELECTRIC COMPANY GAS TURBINE Greenville, SC	SIZE	CAGE CODE	DWG NO	0417
GE Power Generation	<b>B</b>		357B5097	
DRAWN KARTHI MUTHU	02-02-04			
ISSUED JR SANCHEZ	02-02-13	SCALE NONE	SHEET	3

DISTR TO